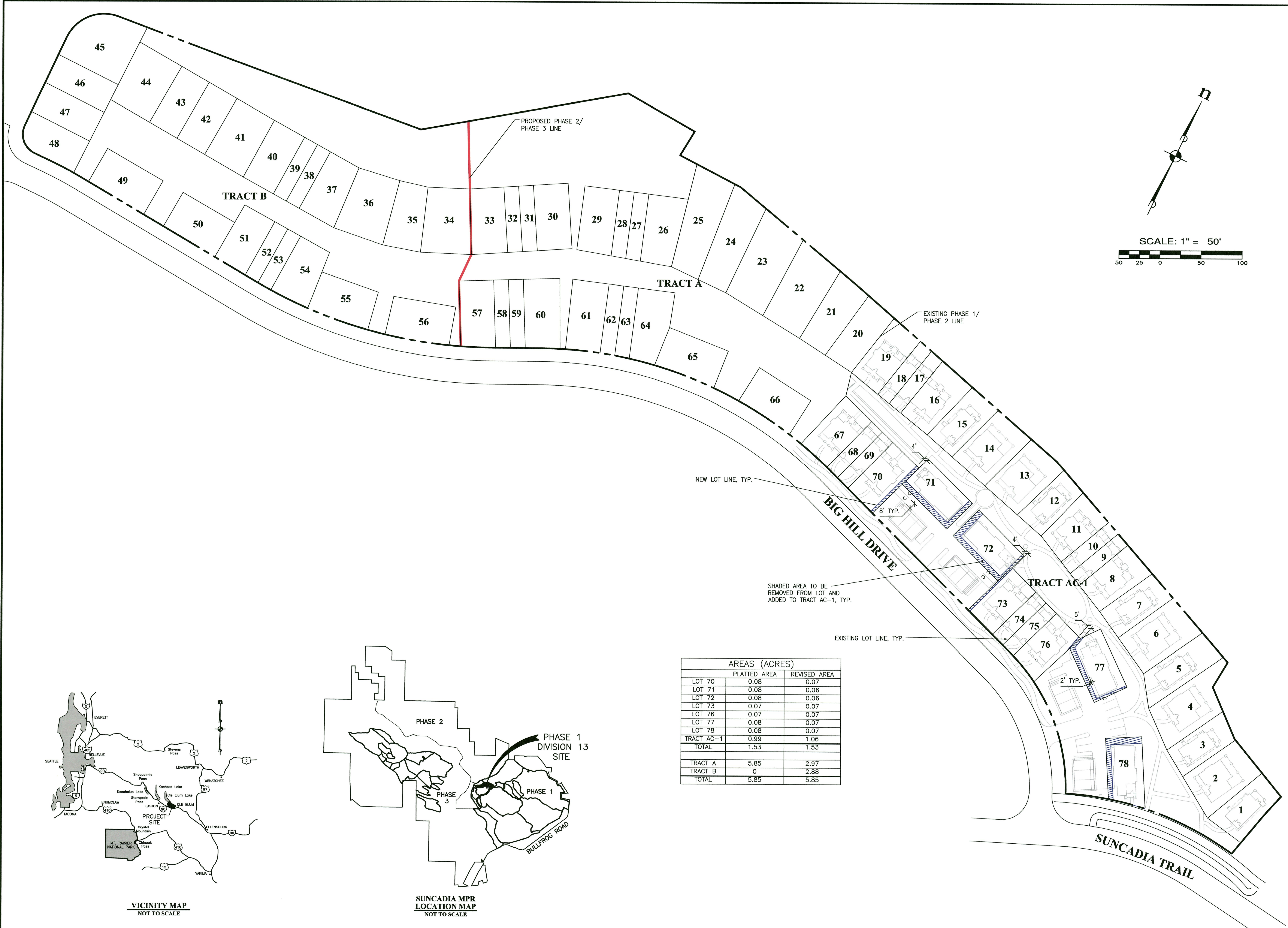
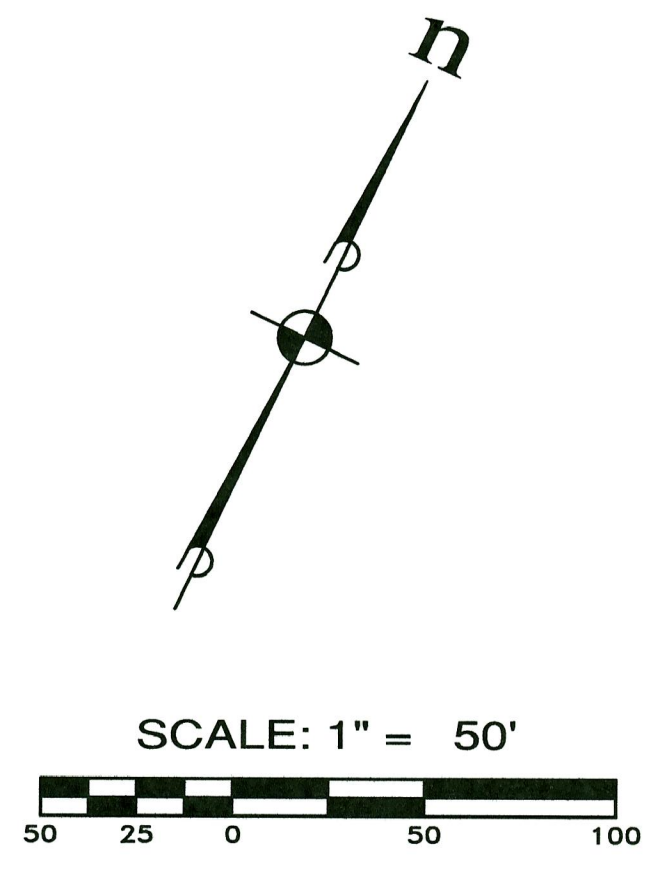


REVISIONS		
NO.	DESCRIPTION/DATE	BY

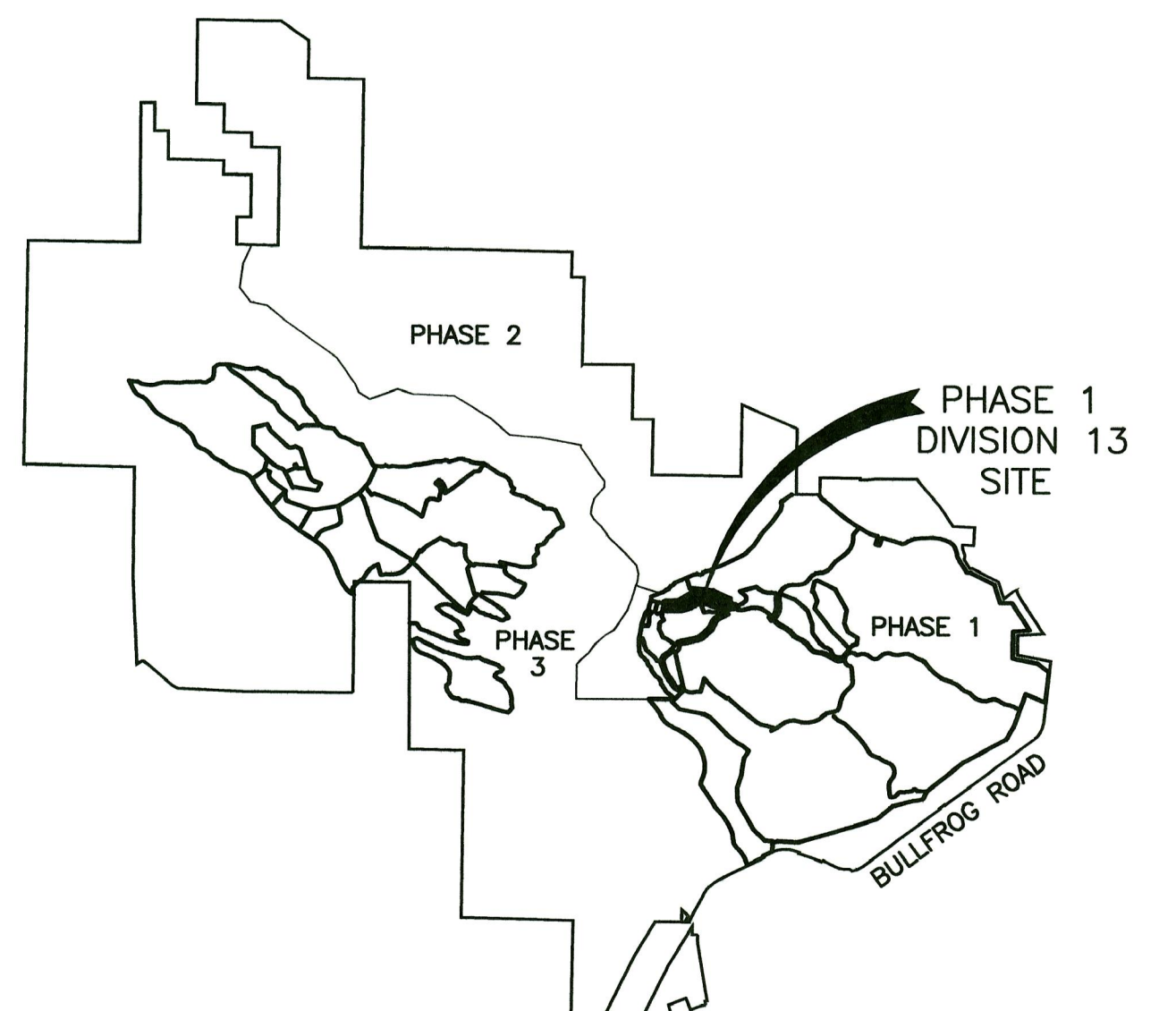
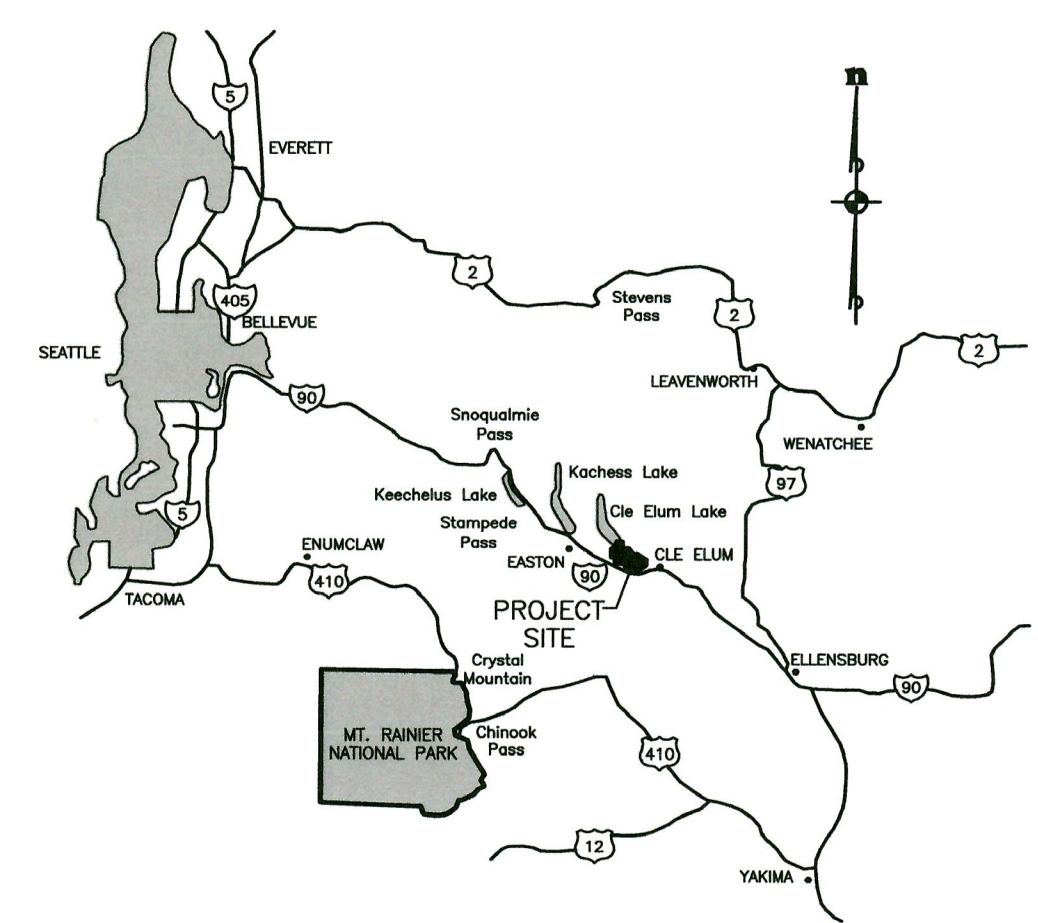
ESM CONSULTING ENGINEERS, L.L.C.
 33915 1st Way South #200
 Federal Way, WA 98003
 www.esmcivil.com
 Civil Engineering Public Works
 Land Surveying Project Management
 Land Planning Landscape Architecture
 (206) 836-6113
 (206) 836-6113
 (206) 836-6113

BENNETT DEVELOPMENT, INC.
SUNCADIA PHASE 1 DIVISION 13
 KITITAS COUNTY PROPOSED TALISMAN PHASING AND LOT LINE ADJUSTMENTS WASHINGTON

JOB NO.: 1282-009-007
 DWG. NAME: EN-29
 DESIGNED BY:
 DRAWN BY:
 CHECKED BY:
 DATE: 2009-04-22
 DATE OF PRINT:



	AREAS (ACRES)	
	PLATTED AREA	REVISED AREA
LOT 70	0.08	0.07
LOT 71	0.08	0.06
LOT 72	0.08	0.06
LOT 73	0.07	0.07
LOT 76	0.07	0.07
LOT 77	0.08	0.07
LOT 78	0.08	0.07
TRACT AC-1	0.99	1.06
TOTAL	1.53	1.53
TRACT A	5.85	2.97
TRACT B	0	2.88
TOTAL	5.85	5.85



File: \\esm\ENR\ENR\1282\009\1282-009-007\mshaha\EN-29.dwg
 Plotted: 7/22/2009 10:27 AM
 Plotted By: Laura Cochran